

Phases of Reintroduction & Reopening Schools

**Reed Union School District
Board Presentation
August 6, 2020**

Process for Reopening Schools

- May/June - Surveys of parents, students, and staff
- April through July - Possible reopening hybrid plans developed given current guidance of 12 student cohorts
- June 18 through 30 - point safety guidance from Public Health on reopening, made some hybrid plans less feasible
- June 29 - SB 98 and AB 77 trailer bill language on how districts offer distance and hybrid programs
- June 22 & 24 - Reopening subcommittee of school teams started planning with new guidance; meetings suspended until negotiations concluded
- July 2, 3, 9, 10, 22 - Negotiations with Reed Teachers Association; July 29 MOU Ratified
- July 17 - Governor orders for schools campuses remain closed if the county is on the state monitoring list; August 3 CDPH waiver criteria
- July 23 - Expanded Reopening Committee including Trustees, parents and community representatives reviewed plans and provided input; school planning teams continue to meet over next several weeks
- July 27 and August 6 - Reopening plan presented to Board of Trustees

The background of the slide features a blurred image of a workspace. On the right, a laptop is open, its screen dark. To the left of the laptop, there are some papers and a pen. The entire image is covered with a semi-transparent blue overlay, which makes the text stand out.

RUSD Continuity of Education and Guiding Principles

Continuity of Education (Draft)

1. Physical Health and Safety
2. Equity and Inclusion
3. Academic Excellence
4. Flexibility and Adaptability
5. Social-Emotional/Relationships
6. Best-in-Class Practices
7. Assessments/Feedback
8. Technology
9. Professional Development
10. Communication

Distance Learning

1. Reputable and safe online curriculum and learning tools
2. Research supported instructional strategies for effective distance learning
3. Clear assessment protocols, practices, and expectations
4. Ongoing Professional Development
5. Continuous Teacher Feedback Mechanisms
6. Clear Communication



Phases of Reintroduction for the 2020–2021 School Year

RUSD Phases of Reintroduction: A Phased Approach to Reopening School 2020-21

Phase 1	Distance Learning	Criteria Met: Guidance or ordered by Public Health or Governor that schools must provide instruction remotely in response to the spread of COVID-19; County is on State Watchlist	<p>Public Health or the Governor have recommended or ordered schools to provide distance learning in response to spread of COVID-19</p> <p>Daily live virtual instruction representing whole class and small groups</p> <p>Blended synchronous and asynchronous instruction and independent work</p> <p>Daily schedule accommodates a minimum of 4 hours of learning activities</p>
Phase 2	Split Cohort Hybrid Model	Criteria Met: County is no longer on State Watchlist; Guidance from Public Health or the Governor; or waiver approved by Marin Public Health	<p>Combines in-person and distance learning</p> <p>Provides for maximum physical distancing between students</p> <p>Half of the students in the class (cohort) attend school in person on different days</p> <p>Provides similar student to adult ratios as pop up childcare and summer camps</p> <p>Phased-in model that accommodates students and staff ability to learn and practice to new protocols and procedures to maximize safety</p> <p>Limits the number of contacts students have with different adults during the day</p> <p>Daily schedule accommodates minimum of 4 hours of learning activities</p> <p>4-hour in-person instruction which accommodates contractual preparation/planning periods</p> <p>Lunch to grab and take home</p> <p>Staggered entry/exit</p> <p>Strict safety measures including physical distancing, EPE/PPE, increased cleaning</p>

Phase 3	Full Cohort Hybrid Model	Criteria Met: Guidance from Public Health or the Governor; opportunity to familiarize students and staff with new safety protocols. Decision to move to this phase accommodates no less than 15 school days for teachers to prepare for full cohort attendance per Ratified MOU	<p>Combines in-person and distance learning</p> <p>Provides physical distancing between students of 5 – 6 feet</p> <p>Full cohort attends every day for 4 hours of in-person instruction</p> <p>Daily schedule accommodates a minimum of hours of learning activities</p> <p>Limit the number of contacts students have with different adults during the day</p> <p>Lunch to grab and take home</p> <p>4-hour in-person instruction which accommodates contractual preparation/ planning periods</p> <p>Staggered entry/exit</p> <p>Strict safety measures including physical distancing, EPE/PPE, and increased cleaning</p>
Phase 4	Full Cohort Complete Return	Criteria Met: Guidance from Public Health; students are able to have multiple contacts with different adults; structures are in place to accommodate teacher contractual preparation periods	<p>Return to full-day in-person learning</p> <p>Staggered entry/exit</p> <p>Strict safety measures including physical distancing, EPE/PPE, and increased cleaning</p> <p>Schedule accommodates contractual preparation/planning periods since students will have more contacts with different teachers</p>
Phase 5	Complete Return	Criteria Met: Guidance from Public Health; vaccination readily available	<p>Full return for all students</p> <p>Health and safety restrictions are lifted</p>

Phase Criteria Detail

Phase 1 – Criteria

- Governor announces schools on monitoring list must not physically open for in-person instruction until off list for 14 days
- Public Health Office announces districts may begin in-person instruction no sooner than 9/8, depending on local data, safety readiness, testing availability and public health guidance
- Superintendent of school may request a waiver, in consultation with labor, parents and community organizations and must publish school reopening and safety plans on the website; Waiver only applies to K-6 for RUSD; Local public health officer must review reopening plans and approve waiver based on current guidance

Phase 2 – Criteria

- County is off of the watchlist for 14 days
- Governor or Public Health provides guidance that schools may resume in-person instruction
- OR Marin County Public Health officer approves waiver to resume in-person instruction

Phase Criteria Detail (con't.)

Phase 3 – Criteria

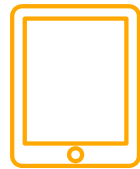
- Governor or Public Health provides guidance that allows us to move to full cohort hybrid
- District has had the opportunity to familiarize students and staff with safety protocols
- Decision to move to this phase accommodates no less than 15 days for teachers and staff to prepare for the next phase per ratified MOU

Phase 4 – Criteria

- Governor or Public Health provides guidance that allows us to move full cohort complete return
- Students are able to have multiple contacts with different adults
- Structures are in place to accommodate teacher contractual preparation periods

Phase 5 - Criteria

- Governor or Public Health provides guidance that allows for complete return of students
- Vaccination is readily available



Phase 1

Distance Learning for 2020-2021

Instructional hours: Approximately 5 hours including synchronous, asynchronous, guided and independent learning time

Daily Live Interaction/Instruction: provide instruction, progress monitoring and maintaining school connectedness in both whole class and small group settings. Rigorous program that resembles content students learn when in the classroom

Platform: One dedicated Zoom link for the class

Communication Delivery Platforms: Google Classroom, ALMA, Seesaw and Email

Feedback and Assessments: Real time feedback during instruction, peer conferencing, Google Classroom; oral and written forms. Assessments methods include analyzing student work, individual or curriculum aligned assessments, Google Forms and Nearpod (virtual assessment tools)

Interventions: Tier 2 and ELD interventions and supports will be provided; Special Education services will continue

Core Program Support: Elementary specialists will teach their subject and support core content areas

Reed Phase 1 Sample Weekly Distance Learning Plan

Legend

Synchronous Instruction with classroom teacher or *Tier 2 support teacher

Synchronous Instruction with Specialist

Independent work time: completion of teacher assigned lessons

Kindergarten & 1st Grade SAMPLE Distance Learning Schedule

Monday	Tuesday	Wednesday	Thursday	Friday
9:00-9:45 Opening & SEL w/ cohort teacher	9:00-9:45 Opening & SEL w/cohort teacher	9:00-9:45 Opening & SEL w/cohort teacher	9:00-9:45 Opening & SEL w/cohort teacher	9:00-9:45 Opening & SEL w/cohort teacher
9:45-10:30 PE w/specialist	9:45-10:30 ELA w/cohort teacher	9:45-10:30 Library/ELA w/specialist	9:45-10:30 ELA w/cohort teacher	9:45-10:30 PE w/specialist
morning break				
10:45-11:30 ELA w/cohort teacher	10:45-11:30 Spanish w/specialist	10:45-11:30 ELA w/cohort teacher	10:45-11:30 Music w/specialist	10:45-11:30 ELA w/cohort teacher
11:30-12:15 Math w/ cohort teacher	11:30-12:15 Math w/ cohort teacher	11:30-12:15 Math w/ cohort teacher	11:30-12:15 Math w/ cohort teacher	11:30-12:15 Math w/ cohort teacher
lunch				
1:00-1:45 Independent Apps & assigned work	1:00-1:45 Independent Apps & assigned work	1:00-1:45 Independent Apps & assigned work	1:00-1:45 Independent Apps & assigned work	1:00-1:45 Independent Apps & assigned work
	*K/1st Tier 2 support	*K/1st Tier 2 support	*K/1st Tier 2 support	*K/1st Tier 2 support

2nd Grade SAMPLE Distance Learning Schedule

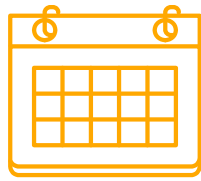
Monday	Tuesday	Wednesday	Thursday	Friday
9:00-9:45 Opening & SEL w/ cohort teacher	9:00-9:45 Opening & SEL w/cohort teacher	9:00-9:45 Opening & SEL w/cohort teacher	9:00-9:45 Opening & SEL w/cohort teacher	9:00-9:45 Opening & SEL w/cohort teacher
9:45-10:30 ELA w/cohort teacher	9:45-10:30 ELA w/cohort teacher	9:45-10:30 ELA w/cohort teacher	9:45-10:30 ELA w/cohort teacher	9:45-10:30 PE w/specialist
Morning Break				
10:45-11:30 Math w/cohort teacher	10:45-11:30 Math w/cohort teacher	10:45-11:30 Math w/cohort teacher	10:45-11:30 Math w/cohort teacher	10:45-11:30 ELA w/cohort teacher
11:30-12:15 Science assigned work & apps w/cohort teacher support Tier 2 w/support staff	11:30-12:15 Science assigned work & apps w/cohort teacher support Tier 2 w/support staff	11:30-12:15 Science assigned work & apps w/cohort teacher support Tier 2 w/support staff	11:30-12:15 Science assigned work & apps w/cohort teacher support Tier 2 w/support staff	11:30-12:15 Science assigned work & apps w/cohort teacher support Tier 2 w/support staff
Lunch				
1:00-1:45 Independent Assigned work	1:00-1:45 Library/ELA w/specialist	1:00-1:45 Spanish w/specialist	1:00-1:45 Music w/specialist	1:00-1:45 Math w/cohort teacher

Bel Aire Phase 1 Sample Weekly Distance Learning Plan

Legend				
Synchronous Instruction with classroom teacher or *Tier 2 support teacher				
Synchronous Instruction with Specialist:				
Spanish	Music	PE	Art	Library
Independent work time: completion of teacher assigned lessons				

4th Grade SAMPLE Distance Learning Schedule

Monday	Tuesday	Wednesday	Thursday	Friday
9:00-9:45 Certificated Learning Block: MATH	9:00 - 9:45 Certificated Specialist Block: ART	9:00-9:45 Certificated Learning Block: MATH	9:00-9:45 Certificated Learning Block: MATH	9:00-9:45 Certificated Learning Block: MATH
9:45-10:30 Certificated Learning Block: READING	9:45-10:30 Certificated Learning Block: READING	9:45 - 10:30 Certificated Specialist Block: PE	9:45-10:30 Certificated Learning Block: READING	9:45-10:30 Certificated Learning Block: READING
BREAK				
10:45-11:30 Certificated Specialist Block: MUSIC	10:45-11:30 Certificated Learning Block: MATH	10:45 - 11:30 Certificated Learning Block: READING	10:45 - 11:30 Certificated Learning Block: WRITING	10:45 - 11:30 Certificated Learning Block: WRITING
11:30 - 12:15 Certificated Learning Block: WRITING	11:30 - 12:15 Certificated Learning Block: WRITING	11:30 - 12:15 Certificated Learning Block: WRITING	11:30 - 12:15 Certificated Specialist Block: LIBRARY	11:30-12:15 Certificated Learning Block: SCIENCE
LUNCH				
1:00 - 1:45 Independent Learning Block	1:00 - 1:45 Certificated Learning Block: SOCIAL STUDIES	1:00 - 1:45 Certificated Learning Block: SCIENCE	1:00 - 1:45 Certificated Learning Block: SOCIAL STUDIES	1:00 - 1:45 Certificated Specialist Block: SPANISH



Del Mar Phase 1 Sample Weekly Distance Learning Plan

Del Mar Distance Learning Schedule

Monday

*Sample 7th Grade Student, Phase 1
Schedule*

Monday	Class Period	Sample Work
7:50 - 8:30 a.m.	Independent Learning Block	Update planner and prioritize assignments
8:30 - 8:55 a.m.	Period 1 - Math	Required On-Line Session w/ Teacher
8:55 - 9:05 a.m.	Teacher Passing Period	Student Break
9:05 - 9:30 a.m.	Period 2 - English	Required On-Line Session w/ Teacher
9:30 - 9:40 a.m.	Teacher Passing Period	Student Break
9:40 - 10:05 a.m.	Period 3 - Elective Wheel	Required On-Line Session w/ Teacher
10:05 - 10:15 a.m.	Teacher Passing Period	Student Break
10:15 - 10:40 a.m.	Period 4 - Science	Required On-Line Session w/ Teacher
10:40 - 11:10 a.m.	BREAK	Student and Teacher Break
11:10 - 11:35 a.m.	Period 5 - History	Required On-Line Session w/ Teacher
11:35 - 11:45 a.m.	Teacher Passing Period	Student Break
11:45 - 12:10 p.m.	Period 6 - Spanish	Required On-Line Session w/ Teacher
12:10 - 12:20 p.m.	Teacher Passing Period	Student Break
12:20 - 12:45 p.m.	Period 7 - PE	Required On-Line Session w/ Teacher
12:45 - 12:55 p.m.	Teacher Passing Period	Student Break
12:55 - 1:00 p.m.	Advisory	Required On-Line Session w/ Teacher
1:00 p.m.	Early Release Day	
After School	Homework	<ul style="list-style-type: none"> - 30 minutes of Reading - Math IXL Assignments - Additional homework as assigned

Del Mar Distance Learning Schedule

Tuesday/Thursday

*Sample 7th Grade Student, Phase 1
Schedule*

Tues/Thurs	Class Period	Sample Work
7:50 - 8:30 a.m.	Independent Learning Block	Update planner and prioritize assignments
8:30 - 9:15 a.m.	Period 1 - Math	Required Online Class
9:15 - 9:25 a.m.	Teacher Passing Period	Student Break
9:25 - 10:10 a.m.	Period 2 - English	Required Online Class
10:10 - 10:20 a.m.	Teacher Passing Period	Student Break
10:10 - 11:05 a.m.	Period 3 - Elective Wheel	Required Online Class
11:05 - 11:15 a.m.	Teacher Passing Period	Student Break
11:15 - 12:00 p.m.	Period 4 - Science	Required Online Class
12:00 - 12:30 p.m.	LUNCH	Student Lunch
12:30 - 1:00 p.m.	Period 1 - Math	ILB - Optional Student Online Office Hours
1:00 - 1:10 p.m.	Teacher Passing Period	Student Break
1:10 - 1:40 p.m.	Period 2 - English	ILB - Optional Student Online Office Hours
1:40 - 1:50 p.m.	Teacher Passing Period	Student Break
1:50 - 2:20 p.m.	Period 3 - Elective Wheel	ILB - Optional Student Online Office Hours
2:20 - 2:30 p.m.	Teacher Passing Period	Student Break
2:30 - 3:00 p.m.	Period 4 - Science	ILB - Optional Student Online Office Hours
After School	Homework	- Reading, Math, additional assignments

Del Mar Distance Learning Schedule

Wednesday/Friday

*Sample 7th Grade Student, Phase 1
Schedule*

Wed/Fri	Class Period	Sample Work
7:50 - 8:30 a.m.	Independent Learning Block	Update planner and prioritize assignments
8:30 - 9:15 a.m.	Period 5 - History	Required Online Class
9:15 - 9:25 a.m.	Teacher Passing Period	Student Break
9:25 - 10:10 a.m.	Period 6 - Spanish	Required Online Class
10:10 - 10:20 a.m.	Teacher Passing Period	Student Break
10:10 - 11:05 a.m.	Period 7 - PE	Required Online Class
11:05 - 11:15 a.m.	Teacher Passing Period	Student Break
11:15 - 12:00 p.m.	Advisory	Required Online Class
12:00 - 12:30 p.m.	LUNCH	Student Lunch
12:30 - 1:00 p.m.	Period 5 - History	ILB - Optional Student Online Office Hours
1:00 - 1:10 p.m.	Teacher Passing Period	Student Break
1:10 - 1:40 p.m.	Period 6 - Spanish	ILB - Optional Student Online Office Hours
1:40 - 1:50 p.m.	Teacher Passing Period	Student Break
1:50 - 2:20 p.m.	Period 7 - Spanish	ILB - Optional Student Online Office Hours
2:20 - 3:00 p.m.	Independent Learning Block	Work Completion
After School	Homework	- Reading, Math, additional assignments



PHASE 2 HYBRID MODELS



A/B vs. AM/PM

A/B vs. AM/PM

Efficacy

Teacher/staff recommendation and feedback in stakeholder meeting

Efficiency

Maximizes in-person time & content delivery and avoids 12 arrival & dismissal sessions a day

Safety

2 deep cleanings a week vs. 2 per day

More efficient contact tracing

Minimizes number of people on campus per day

Equity & Access

Time of day preferences

More access to teacher

More opportunities for student support services

Maximizes time for support staff to work with students

Time for parents

4 hour block of time vs 2.5 hours



Del Mar Phase 2 A/B Hybrid Model Overview

Del Mar's Hybrid Model Overview | 6-8

Easy transition from Distance to Hybrid

Same Schedule!

Required Face-to-Face Contact with Teachers Daily

Programmatic Changes

7th and 8th Grade Math Classes

Math 7C and Algebra continue and delivered
in new ways

Elective wheels at all grade levels

Del Mar Middle School

Sample Weekly Schedule for a 7th Grader - Cohort A

VIRTUAL		ON CAMPUS			VIRTUAL		
	Monday		Tuesday	Wednesday		Thursday	Friday
8:00 - 10:10	Periods 1 - 4 (virtual class meetings)		7:50 - 8:20 Independent Learning Block	Independent Learning Block		7:50 - 9:45 Independent Learning Block	Independent Learning Block
10:10 - 10:40	BREAK		8:20 - 8:30 On Campus Check-In	On Campus Check-In		9:45 - 10:00 Break	Break
10:40 - 12:35	Periods 5-7, Advisory		8:30 - 12:00 Periods 1 - 4	Periods 5-7, Advisory		10:00 - 12:00 Independent Learning Block	Independent Learning Block
12:35 - 1:05	LUNCH		12:00 - 1:00 Return Home and LUNCH	Return Home and LUNCH		12:00 - 12:30 LUNCH	LUNCH
1:05	Early Dismissal		1:00 - 3:00 Independent Learning Block	Independent Learning Block		12:30 - 3:00 Required Online Sessions w/ Teachers Periods 1-4	Required Online Sessions w/ Teachers Periods 5-7, Advisory
After School	Homework		After School Homework	Homework		After School Homework	Homework

Del Mar Middle School

Phase 2 Hybrid

Monday
Distance Learning

Sample Schedule for
a 7th Grader

**Same Schedule as in Phase 1*

Monday	Class Period	Sample Work
7:50 - 8:30 a.m.	Independent Learning Block	Update planner and prioritize assignments
8:30 - 8:55 a.m.	Period 1 - Math	Required Online Session w/ Teacher
8:55 - 9:05 a.m.	Teacher Passing Period	Student Break
9:05 - 9:30 a.m.	Period 2 - English	Required Online Session w/ Teacher
9:30 - 9:40 a.m.	Teacher Passing Period	Student Break
9:40 - 10:05 a.m.	Period 3 - Elective Wheel	Required Online Session w/ Teacher
10:05 - 10:15 a.m.	Teacher Passing Period	Student Break
10:15 - 10:40 a.m.	Period 4 - Science	Required Online Session w/ Teacher
10:40 - 11:10 a.m.	BREAK	Student and Teacher Break
11:10 - 11:35 a.m.	Period 5 - History	Required Online Session w/ Teacher
11:35 - 11:45 a.m.	Teacher Passing Period	Student Break
11:45 - 12:10 p.m.	Period 6 - Spanish	Required Online Session w/ Teacher
12:10 - 12:20 p.m.	Teacher Passing Period	Student Break
12:20 - 12:45 p.m.	Period 7 - PE	Required Online Session w/ Teacher
12:45 - 12:55 p.m.	Teacher Passing Period	Student Break
12:55 - 1:00 p.m.	Advisory	Required Online Session w/ Teacher
1:00 p.m.	Early Release Day	
After School	Homework	<ul style="list-style-type: none"> - 30 minutes of Reading - Math IXL Assignments - Additional homework as assigned

Del Mar Middle School

Phase 2 Hybrid

TUESDAY
On Campus

Sample Schedule
for a 7th Grader

Tuesday	Class Period	Sample Work
7:50 - 8:20 a.m.	Independent Learning Block	Update planner and prioritize assignments
8:20 - 8:30 a.m.	School Check-In	Temp Check-In
8:30 - 9:15 a.m.	Period 1 - Math	IN-CLASS WORK
9:15 - 9:25 a.m.	Teacher Passing Period	Student Break
9:25 - 10:10 a.m.	Period 2 - English	IN-CLASS WORK
10:10 - 10:20 a.m.	Teacher Passing Period	Student Break
10:10 - 11:05 a.m.	Period 3 - Elective Wheel	IN-CLASS WORK
11:05 - 11:15 a.m.	Teacher Passing Period	Student Break
11:15 - 12:00 p.m.	Period 4 - Science	IN-CLASS WORK
12:00 - 1:00 p.m.	Dismissal and LUNCH	Student returns home and breaks for lunch
1:00 - 3:00 p.m.	Independent Learning Block	<ul style="list-style-type: none"> - Complete Math Workbook Pages - Start PEER Paragraph - Finish Science Lab Write-Up
After School	Homework	<ul style="list-style-type: none"> - 30 minutes of Reading - Math IXL Assignments - Additional homework as assigned

Del Mar Middle School

Phase 2 Hybrid

WEDNESDAY
On Campus

Sample Schedule
for a 7th Grader

Wednesday	Class Period	Sample Work
7:50 - 8:20 a.m.	Independent Learning Block	Complete Spanish Assignment
8:20 - 8:30 a.m.	School Check-In	Temp Check-In
8:30 - 9:15 a.m.	Period 5 - History	IN-CLASS WORK
9:15 - 9:25 a.m.	Teacher Passing Period	Student Break
9:25 - 10:10 a.m.	Period 6 - Spanish	IN-CLASS WORK
10:10 - 10:20 a.m.	Teacher Passing Period	Student Break
10:10 - 11:05 a.m.	Period 7 - PE	IN-CLASS WORK
11:05 - 11:15 a.m.	Teacher Passing Period	Student Break
11:15 - 12:00 p.m.	Advisory	IN-CLASS WORK
12:00 - 1:00 p.m.	Dismissal and LUNCH	Student returns home and breaks for lunch
1:00 - 3:00 p.m.	Independent Learning Block	<ul style="list-style-type: none"> - Complete Math Workbook Pages - Meet w/ Group for History Project - Prep outline for History Essay
After School	Homework	<ul style="list-style-type: none"> - 30 minutes of Reading - Math IXL Assignments - Additional homework as assigned

Del Mar Middle School

Phase 2 Hybrid
THURSDAY
Distance Learning
Sample Schedule for
a 7th Grader

Thursday	Class Period	Sample Work
7:50 - 9:45 a.m.	Independent Learning Block	- Math Workbook Pages - Science Group Project Work
9:45 - 10:00 a.m.	Break	Student Break
10:00 - 12:00 p.m.	Independent Learning Block	- Engineering Drawing - Read Science Pages
12:00 - 12:30 p.m.	LUNCH	Student Lunch
12:30 - 1:00 p.m.	Period 1 - Math	Required Online Session w/ Teacher
1:00 - 1:10 p.m.	Teacher Passing Period	Student Break
1:10 - 1:40 p.m.	Period 2 - English	Required Online Session w/ Teacher
1:40 - 1:50 p.m.	Teacher Passing Period	Student Break
1:50 - 2:20 p.m.	Period 3 - Elective	Required Online Session w/ Teacher
2:20 - 2:30 p.m.	Teacher Passing Period	Student Break
2:30 - 3:00 p.m.	Period 4 - Science	Required Online Session w/ Teacher
After School	Homework	- 30 minutes of Reading - Math IXL Assignments - Additional homework as assigned

Del Mar Middle School

Phase 2 Hybrid
FRIDAY
Distance Learning
Sample Schedule for
a 7th Grader

Friday	Class Period	Sample Work
7:50 - 9:45 a.m.	Independent Learning Block	- Create Science Model - Practice History Presentation
9:45 - 10:00 a.m.	Break	Student Break
10:00 - 12:00 p.m.	Independent Learning Block	- Math Workbook Video and Pages - Spanish Conversation Practice
12:00 - 12:30 p.m.	LUNCH	Student Lunch
12:30 - 1:00 p.m.	Period 5 - History	Required Online Session w/ Teacher
1:00 - 1:10 p.m.	Teacher Passing Period	Student Break
1:10 - 1:40 p.m.	Period 6 - Spanish	Required Online Session w/ Teacher
1:40 - 1:50 p.m.	Teacher Passing Period	Student Break
1:50 - 2:20 p.m.	Period 7 - PE	Required Online Session w/ Teacher
2:20 - 2:30 p.m.	Teacher Passing Period	Student Break
2:30 - 3:00 p.m.	Advisory	Required Online Session w/ Teacher
After School	Homework	- 30 minutes of Reading - Math IXL Assignments - Additional homework as assigned



K-5 Phase 2

A/B Hybrid Model

Overview

A/B Model Overview | K-5

- **2 days in-person:** 3 periods of **Certificated Learning Blocks** with focus on core content coverage
- **3 days virtual:** Structured, supported, guided DL
 - **(1) Monday** (like Phase 1)
 - 2 **Certificated Learning Block**
 - 2 **Guided Learning Blocks**
 - 1 **Independent Learning Block**
 - **(2) Alternate days (T/W or Th/F)**
 - Scheduled day with designated breaks, lunch, and **Independent Learning Block**
 - 2 daily meetings with classroom teacher
 - 1-3 (livestream) virtual lessons with specialists for that content and core support

Reed Phase 2 Hybrid Sample Weekly Schedule

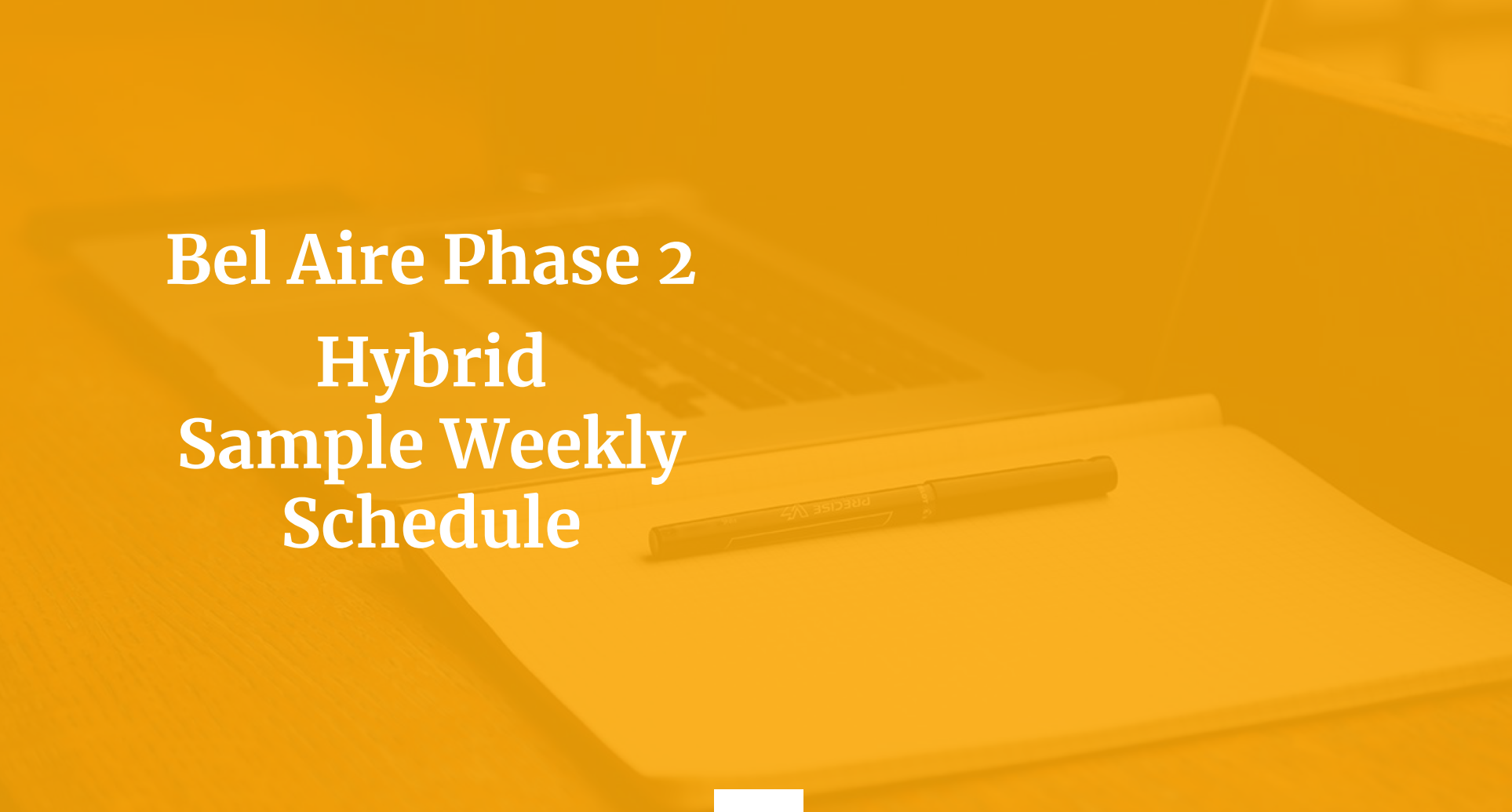
Legend

Online, synchronous instruction with a certificated teacher

In person instruction with a classroom teacher

Independent work time: completion of teacher assigned lessons

Monday Whole Class Virtual Day *Synchronous Instruction	Tuesday & Wednesday In Person Days *Synchronous Instruction	Thursday & Friday Alternate Virtual Days *Synchronous Instruction
9:00-9:45 Opening & SEL* ELA	8:00-8:35 Arrival & Handwashing	
	8:35-8:55 Whole Class Meeting*	8:35-8:55 Whole Class Meeting w/teacher*
9:45-10:30 Math*	8:55-9:40 Reading Lesson	8:55-9:35 Music or Spanish*
10:30-10:45 Break	9:40-10:05 Recess & Hand Washing	9:35-11:05 Independent Block: Math
10:45-11:30 PE*	10:05-10:50 Writing Lesson	11:05-11:45 Library/Core Support*
11:30-12:15 Writing*	11:00-11:45 Math Lesson	11:45-12:15 Lunch
12:15-1:00 Lunch	11:45-12:35 Dismissal & Travel	12:15-12:40 Independent Block: ELA
1:00-1:45 Independent Block Learning apps & assigned work completion	12:35-1:35 Independent Block Learning apps & assigned work completion Tier 2 Support	12:40-1:10 End of Day Check In w/Teacher*
		1:15-1:40 Independent Block: Science



Bel Aire Phase 2

Hybrid Sample Weekly Schedule

MONDAY Distance	TUESDAY In-Person	WEDNESDAY In-Person	THURSDAY Distance	FRIDAY Distance
TEACHER TEAM MEETINGS	STUDENT START: 8:00	STUDENT START: 8:00		
	HANDWASHING	HANDWASHING	STUDENT START: 8:35	STUDENT START: 8:35
	CLASS MEETING	CLASS MEETING	VIRTUAL CLASS MEETING	VIRTUAL CLASS MEETING
CERTIFICATED CLASSROOM TEACHER LEARNING BLOCK	MATH	MATH	VIRTUAL LIBRARY w/core	VIRTUAL PE w/core
CERTIFICATED CLASSROOM TEACHER LEARNING BLOCK	RECESS	RECESS	ILB: Math + Special Ed & Tier II Support	ILB: Math + Special Ed & Tier II Support
BREAK	HANDWASHING	HANDWASHING	BREAK	BREAK
	ART w/ core	WRITING	ILB: ELA + Special Ed & Tier II Support	ILB: ELA + Special Ed & Tier II Support
CERTIFICATED CLASSROOM TEACHER LEARNING BLOCK	HANDWASHING	HANDWASHING	VIRTUAL SPANISH w/core	VIRTUAL MUSIC w/core
VIRTIAL MUSIC w/CORE	READING	READING	LUNCH BREAK	LUNCH BREAK
	DISMISSAL	DISMISSAL	ILB: Science + Special Ed & Tier II Support	ILB: Science + Special Ed & Tier II Support
LUNCH	TRAVEL HOME & LUNCH	TRAVEL HOME & LUNCH	VIRTUAL CLASS MEETING	VIRTUAL CLASS MEETING
ILB learning apps & assigned work completion + Tier II support	ILB Science + learning apps & assigned work completion + Special Ed & Tier II support	ILB Social Studes + learning apps & assigned work completion + Special Ed & Tier II support	ILB learning apps & assigned work completion	ILB learning apps & assigned work completion
	END: 1:35	END: 1:35	END: 1:35	END: 1:35
TEACHER PD				

SAMPLE BEL AIRE WEEK-AT-A-GLANCE

SAMPLE BEL AIRE MONDAY (FULL DISTANCE)

TEACHER TEAM MEETINGS

9:00 - 9:45 | MATH

Direct Instruction, Mini Lessons, Guided Independent Practice, Conferencing, Small-groups, Differentiation, Re-teaching

9:45 - 10:30 | READING

Direct Instruction, Mini Lessons, Guided Independent Practice, Conferencing, Small-groups, Differentiation, Re-teaching

10:30 - 10:45 | BREAK

10:45 - 11:30 | WRITING

Direct Instruction, Mini Lessons, Guided Independent Practice, Conferencing, Small-groups, Differentiation, Re-teaching

10:45 - 11:30 | MUSIC

Specialist mini-lesson w/ core content support

Specialist rotate: ART > MUSIC > PE > SPAN > LIBRARY (* Combined with another 4th grade class)

12:15 - 1:00 | LUNCH

1:00 - 1:45 | (ILB)

Independent practice, assigned work, learning apps, extensions, enrichment, sustained reading

***Special Education services & Tier II Intervention support services**

TEACHER PD | STAFF MEETINGS | DEPARTMENT WORK | TEAM MEETINGS

SAMPLE BEL AIRE TUESDAY/WEDNESDAY (IN-PERSON)

TUESDAY

STUDENT START: 8:00
ENTRY PROCEDURES & SCREENINGS
HANDWASHING

8:35 - 8:55 | FULL CLASS MEETING (w/ HOME COHORT)

8:55 - 9:40
MATH

9:40 - 9:55 | RECESS

9:55 - 10:05 | HANDWASHING

10:05 - 10:45
VIRTUAL **ART** w/ CORE

10:50 - 11:00 | HANDWASHING

11:00 - 11:45
READING

DISMISSAL FROM SCHOOL

12:05 - 12:35 | HOME & LUNCH

12:35 - 1:35
INDEPENDENT LEARNING BLOCK (ILB):
SCIENCE
independent practice, assigned work, learning apps, extensions,
enrichment, sustained reading + ***Special Education services & Tier II**
Intervention support services

END: 1:35

WEDNESDAY

STUDENT START: 8:00
ENTRY PROCEDURES & SCREENINGS
HANDWASHING

8:35 - 8:55 | FULL CLASS MEETING (w/ HOME COHORT)

8:55 - 9:40
MATH

9:40 - 9:55 | RECESS

9:55 - 10:05 | HANDWASHING

10:05 - 10:45
WRITING LESSON

10:50 - 11:00 | HANDWASHING

11:00 - 11:45
READING LESSON

DISMISSAL FROM SCHOOL

12:05 - 12:35 | HOME & LUNCH

12:35 - 1:35
INDEPENDENT LEARNING BLOCK (ILB):
SOCIAL STUDIES
independent practice, assigned work, learning apps, extensions, enrichment,
sustained reading + ***Special Education services & Tier II Intervention**
support services

END: 1:35

Bel Aire

Phase 2 Hybrid

SAMPLE THURSDAY

(DISTANCE)

THURSDAY Distance	
STUDENT START: 8:35	
Outline day, Social Emotional Learning, Check-In, Questions, Community Building	8:35 - 8:55 FULL CLASS MEETING (w/ SCHOOL COHORT)
Virtual, Synchronous lesson with blended cohorts, & Core Content Support	8:55 - 9:35 LIBRARY LESSON (w/ core)
Math + independent practice, assigned work, learning apps, enrichment, independent reading + *Special Education & Intervention support services	9:35 - 10:15 * INDEPENDENT LEARNING BLOCK (ILB): MATH
	10:15- 10:25 BREAK
ELA + independent practice, assigned work, learning apps, enrichment, independent reading + *Special Education & Intervention support services	10:25 - 11:05 *ILB: ELA
Virtual, Synchronous lesson with blended cohorts, & Core Content Support	11:05 - 11:45 SPANISH LESSON (w/ core)
	11:45 - 12:15 LUNCH BREAK
SCIENCE + independent practice, assigned work, learning apps, enrichment, independent reading + *Special Education & Intervention support services	12:15 - 12:40 *ILB: SCIENCE
Debrief of the day, Student Check-In/ Questions	12:40 - 1:10 VIRTUAL CLASS MEETING w/ TEACHER
Guided practice w/o teacher, assigned work, learning apps, enrichment, independent reading + *Special Education & Intervention support services	1:10 - 1:35 *ILB
END: 1:35	

Bel Aire

Phase 2 Hybrid

SAMPLE Friday

(DISTANCE)

	FRIDAY Distance
	STUDENT START: 8:35
Outline day, Social Emotional Learning, Check-In, Questions, Community Building	8:35 - 8:55 FULL CLASS MEETING (w/ SCHOOL COHORT)
Virtual, Synchronous lesson with blended cohorts, & Core Content Support	8:55 - 9:35 PE LESSON (w/ core)
Math + independent practice, assigned work, learning apps, enrichment, independent reading + *Special Education & Intervention support services	9:35 - 10:15 *INDEPENDENT LEARNING BLOCK (ILB):
	10:15 - 10:25 BREAK
ELA + independent practice, assigned work, learning apps, enrichment, independent reading + *Special Education & Intervention support services	10:25 - 11:05 *ILB: ELA
Virtual, Synchronous lesson with blended cohorts, & Core Content Support	11:05 - 11:45 MUSIC LESSON (w/ core)
	11:45 - 12:15 LUNCH BREAK
SCIENCE + independent practice, assigned work, learning apps, enrichment, independent reading + *Special Education & Intervention support services	12:15 - 12:40 *ILB: SCIENCE
Debrief of the day, Student Check-In/ Questions	12:40 - 1:10 VIRTUAL CLASS MEETING w/ TEACHER
Guided practice w/o teacher, assigned work, learning apps, enrichment, independent reading + *Special Education & Intervention support services	1:10 - 1:35 *ILB
	END: 1:35

Sample Bel Aire Week-At-A-Glance

MONDAY Distance	TUESDAY In-Person	WEDNESDAY In-Person	THURSDAY Distance	FRIDAY Distance
TEACHER TEAM MEETINGS	STUDENT START: 8:00	STUDENT START: 8:00		
	HANDWASHING	HANDWASHING	STUDENT START: 8:35	STUDENT START: 8:35
	CLASS MEETING	CLASS MEETING	VIRTUAL CLASS MEETING	VIRTUAL CLASS MEETING
CERTIFICATED CLASSROOM TEACHER LEARNING BLOCK	MATH	MATH	VIRTUAL LIBRARY w/core	VIRTUAL PE w/core
	RECESS	RECESS	ILB: Math + Special Ed & Tier II Support	ILB: Math + Special Ed & Tier II Support
CERTIFICATED CLASSROOM TEACHER LEARNING BLOCK	HANDWASHING	HANDWASHING	BREAK	BREAK
BREAK	ART w/ core	WRITING	ILB: ELA + Special Ed & Tier II Support	ILB: ELA + Special Ed & Tier II Support
	HANDWASHING	HANDWASHING	VIRTUAL SPANISH w/core	VIRTUAL MUSIC w/core
CERTIFICATED CLASSROOM TEACHER LEARNING BLOCK	READING	READING	LUNCH BREAK	LUNCH BREAK
VIRTIAL MUSIC w/CORE	DISMISSAL	DISMISSAL	ILB: Science + Special Ed & Tier II Support	ILB: Science + Special Ed & Tier II Support
LUNCH	TRAVEL HOME & LUNCH	TRAVEL HOME & LUNCH	VIRTUAL CLASS MEETING	VIRTUAL CLASS MEETING
ILB learning apps & assigned work completion + Tier II support	ILB Science + learning apps & assigned work completion + Special Ed & Tier II support	ILB Social Studies + learning apps & assigned work completion + Special Ed & Tier II support	ILB learning apps & assigned work completion	ILB learning apps & assigned work completion
	END: 1:35	END: 1:35	END: 1:35	END: 1:35
TEACHER PD				

Frequently Asked Questions

Can my child Zoom into the classroom all day while they are at home?

Students at home will Zoom in for the opening period where the teacher will provide an opportunity to continue community building for the cohort as well as daily expectations for students in both groups. Teacher will meet with at home students at the end of the day

Decades of research indicates that learning is an interactive process. Passive learning (watching others learn) does not engage students in a lesson since there will be limited or no interaction with the class or teacher during the instruction

Questions would not be readily answered for students not attending in person and would require more reteaching

Why does the hybrid model have all students distance learning on Mondays?

Distance learning on Mondays allows all students to have access to their teacher and peers (greater content coverage, continuity, and connectedness)

Using Monday as a distance learning day for all students, enables the teacher to set up the week's learning for the entire class

The day will still be structured with multiple opportunities for live instruction and interaction with teachers.

Can students who enroll in the extended distance learning program start the year in a regular program class?

No. Considerable conversation was discussed around equity and social-emotional health of students. Maintaining a stable peer group and teacher is best for stability and coherence.

Concerns having a group of students start with one teacher and cohort of students during Phase 1 and then be moved into a new cohort and teacher during Phase 2 would be disruptive both to the student and their cohort.

Classroom teachers cannot maintain two programs for students in their class, one for in-person and the other in extended distance learning without compromising learning for all

Can Reed students have an AM/PM hybrid model instead of A/B?

No. K-8 coherence is critical for families with students at multiple sites; difficult on parent schedules

Staff prefer the A/B model as they know it will provide longer blocks of dedicated instructional time with students

AM/PM model limits the amount of instruction that can take place each day



Thank You!

Any questions?